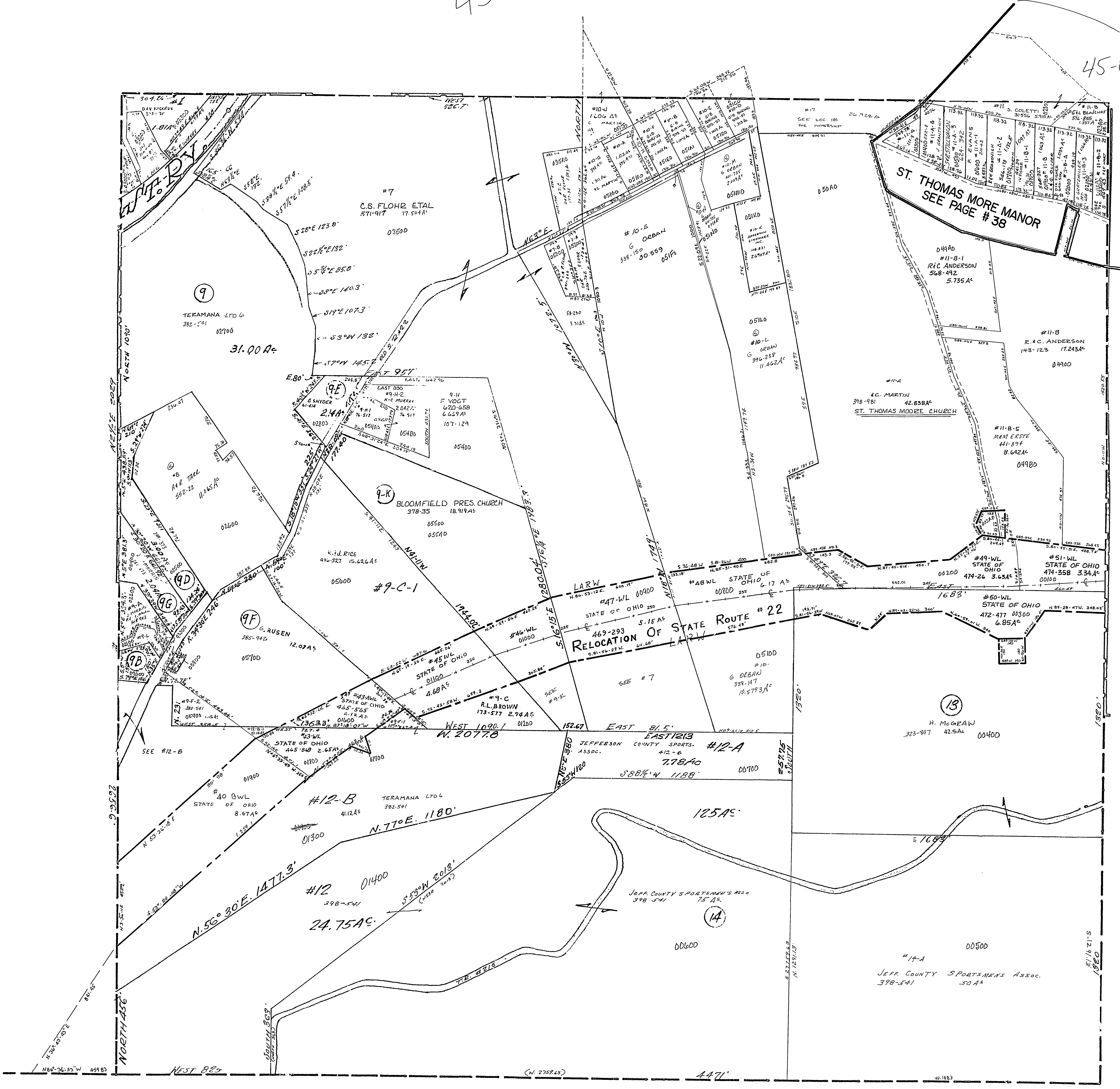


45-1700-

45-017A0-

- #11-D-2 JIJ COLLINS 400-823 1.02 AC
- #40-WL ST. OF OHIO 732-04 0.19 AC
- #9-J O. MAZARIS TR. 468-465 0.11 AC
- #9-L H. CRESAP 266-766 0.46 AC
- #9-B TERAMANA LTD. 381-541 0.80 AC
- #9-F-1 TERAMANA LTD. ... 0.34 AC
- #9-A-1 J.M. MORRIS 354-943 0.23 AC



WAYNE TWP.
 SEC. 17, T. 9, R. 3.
 SCALE 1"=200'